

DRAWING CABARET COUTURE

DCC STUDIOS- GENERAL INFORMATION

(Note - we are an artist based live-work studio with limited photography equipment)

RATES

Standard studio day rate starts at £300

Total 8hrs 10am-6pm additional hrs available on request

(NO HALF-DAY RATES)

Breakdown of hire purpose will be required in the booking form

EQUIPMENT INCLUDED

X2 C Stands

X5 standard lighting stands

X3 8x4 ft Polyboards X2 Polyboard stands

Extension cables

40" Chrome fan

LIGHTS AVAILABLE FOR HIRE

X2 4 Bank kinoflo £100 per day (for both)

X1 650w fresnel Stage light £25 per day

X2 1000w fresnel stage lights £30 per day

DCC CATALOGUE OF BACKDROPS AVAILABLE FOR HIRE

Fine art oil painted canvas 10x16foot start at £250 per day

Bespoke painted design available upon request, commissions start at £850

Catalog available on request - artwork by painter and set designer Matthew Lawrence

PROPS AVAILABLE FOR HIRE

X2 Circular plinths. Dimensions: diameter 710mm height 715mm. cost per day at £25 per item

Rectangular plinth A. Dimensions: height 315mm x depth 620mm x length 1830mm £25

Rectangular plinth B. Dimensions: height 625mm x depth 610mm x length 1220mm £25

Range of plants of various types and sizes please enquire if interested.

Range of oil paintings please enquire if interested.

Black and white checkered lino (2 types and sizes) please enquire if interested

Medium size reds Moroccan rug 5x7foot £25

Medium size reds vintage style rug 5x7foot £10

BRAND NEW PROPS:

0.5 meter wide x 2.4 meter in diameter interactive crescent moon

Structural flower petal plinth

X2 large rock sculptures

X4 Large free standing painted flower sculpture

Large range of tropical house plants

Please ask for more details / images if interested.

SOCIAL MEDIA BTS

Behind the scenes photography available at £150

This includes up to 250 max unedited images photographed on the day

SET DESIGN

In house artist and set designer Matthew Lawrence is available for creating your bespoke set,

Standard day rate starts at £300 for labor.

SPACE FEATURES

3.5 meter square fold out wall (plain white)

3.5 X 5m fixed wall (plain white)

Natural light studio

Full black out available

Mirror Wall- 2.4m height x 2.8m wide

LED neo light fully adjustable RGB & brightness

Note: Key beneficial factors of this space:

- Artistic Direction from artist & set designer Matthew Lawrence, able to tailor his craft to bespoke designs for your shoot, as well as assisting in lighting & photography
- <https://www.instagram.com/mglawrence>
- Bespoke fine art oil painted backdrops
- Movement Direction from artistic choreographer, professionally trained dancer & performer Janet Mayer

FACILITIES

Bathroom with shower facilities

Styling Area, rail with hangers

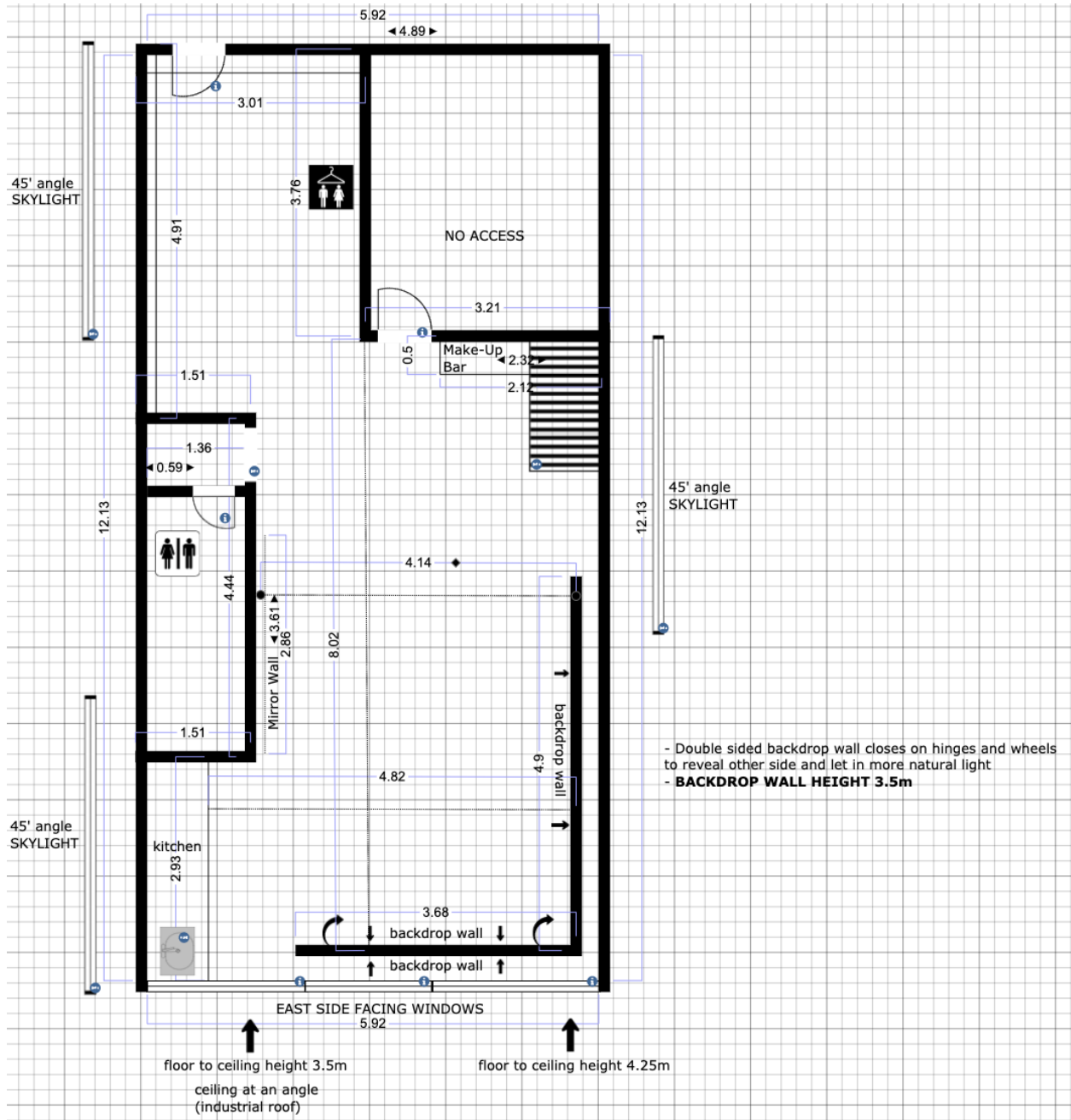
Makeup bar with lighting

Fully equipped kitchenette (with microwave, fridge, kettle, toaster, cafetiere etc.)

Heavy duty goods Lift located at the rear of the building

Private parking - None

DIMENSIONS/FLOOR PLAN



All measurements are in meters

This space has been designed to prioritize maximum versatility for studio photography and filming with two built in flat walls, one on wheels and hinges that enable it to fold in on itself to make use of a 3rd background as well as shooting into a range of angles below 90 degrees.

LOCATION/ ADDRESS

5 minute walk away from Hackney Wick Overground

We are located on the top floor of the building, please buzz 3C on the intercom and we will let you into the building upon your arrival

There is a heavy duty goods Lift located at the rear of the building

Unit 3c

Oslo House- West Wing

20 Felsted Street

London

E9 5LT

Parking is not provided onsite, parking is available by paid meter on street, free on weekends (non events days) .

MORE INFORMATION

<https://www.drawingcabaretcouture.com/studios>

<https://www.instagram.com/dcc.studios/>